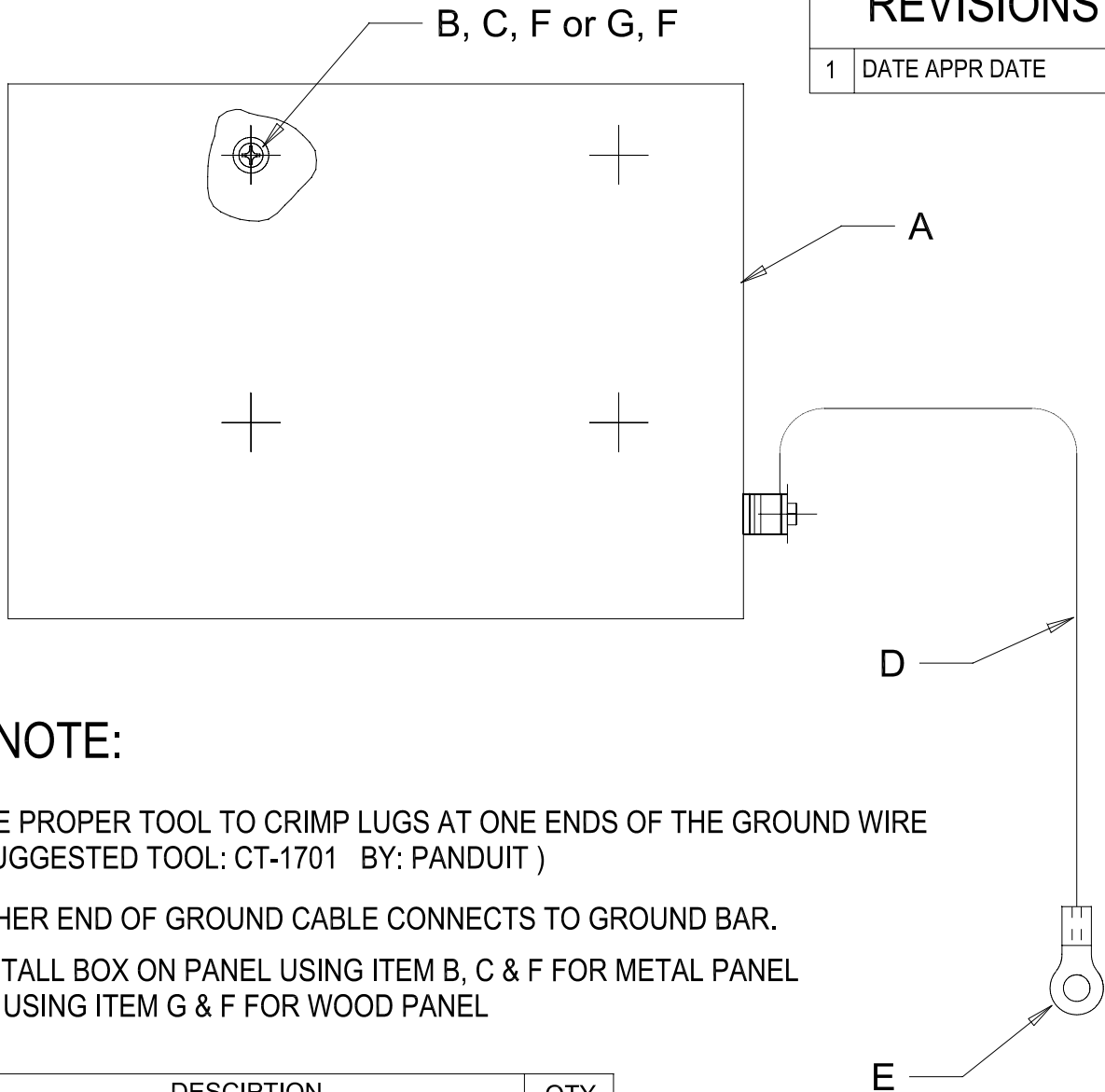


# REVISIONS

1 | DATE APPR DATE



## NOTE:

- 1- USE PROPER TOOL TO CRIMP LUGS AT ONE ENDS OF THE GROUND WIRE ( SUGGESTED TOOL: CT-1701 BY: PANDUIT )
- 2- OTHER END OF GROUND CABLE CONNECTS TO GROUND BAR.
- 3- INSTALL BOX ON PANEL USING ITEM B, C & F FOR METAL PANEL OR USING ITEM G & F FOR WOOD PANEL

ITEM	DESCRIPTION	QTY
A	DIGITAL TERMINAL 4 POSITION	1
B	SCREW, PAN, PHIP, 6-32 X 3/8"L,ST-ST	4
C	WASHER LOCK, #6, ST-ST	4
D	WIRE, STRD, PVC, 10 AWG, GRN/YEL	3 FT
E	LUG, CRIMP, 12-10 AWG, No 10	1
F	WASHER FLAT, #6	4
G	SCREW, WOOD, RND HD, PHIL, #6 X 5/8"L	4

**CONFIDENTIEL**  
 Le contenu de ce document est la propriété exclusive de Positron Inc. à l'exception des renseignements dont Positron Inc. a autorisé par écrit la diffusion, le détenteur du document doit.  
 1) en assurer le caractère confidentiel et empêcher la divulgation et la diffusion totale ou partielle du contenu à un tier.  
 2) l'utiliser aux fins d'exploitation et d'entretien seulement.

**CONFIDENTIAL**  
 The information contained in this document is the prperty of Positron Inc. except as specifically authorized in writing by Positron Inc. The holder of this document.  
 1) shall keep all information contained herein confidential and shall protect same in whole or in part from disclosure and dissemination to all third parties.  
 2) shall use same for operating and maintenance purposes only.



**POSITRON INC.**  
**POWER DIVISION**

PAGE / SHEET  
**1** DE OF **1**

TITRE/TITLE  
**KIT, 4-POSITION DIGITAL TERM.**

ECHELLE/ SCALE

DES/PAR/ DRAWN BY  
**LUC POULIN**  
 25 avril 2012

VERIF.PAR/ CHECKED BY

APPR.PAR / APPR.BY  
**APPROVED**  
 By agingras at 9:54 am, 5/4/12

NUMERO DE DESSIN / DRAWING NO.  
**925W000052-001**

RELACHER/ RELEASE